



AUCTION

LEADING THE INDUSTRY SINCE 1945

SATURDAY – JULY 13, 2019 – 9:30 AM
REAL ESTATE SELLS AT 11:00 AM

38+ Acre Evergreen Farm – 35-Year Family Tree Farm

3-BR BRICK HOME – HEATED SHOP & OUTBUILDINGS

Hilltop Setting – 6,000+/- Christmas Trees – Update To Your Liking
Canton Twp. – Canton Local Schools – Stark Co. – Sells As Entirety
Also Selling: Polaris Ranger – Sawmill – Tractors
Machinist Tools – Woodworking Tools – Lumber
Trailers – Furniture – Glassware – Collectibles

Absolute auction, all sells to the highest bidders on location:

4760 SANDY AVE. SE, CANTON, OH 44707

Directions: Take SR 43 south of RT 30 to Sandy Ave. then south to address. Watch for KIKO signs.



Information is believed to be accurate but not guaranteed.



330.455.9357 • kikoauctions.com



Well maintained 38-acre evergreen farm with quality 3-bedroom brick home, 2-story heated shop building with 2 overhead doors, picnic shelter, large shed currently used for motorhome storage, and numerous outbuildings. The farm has an estimated 6,000 evergreens including blue spruce, white pine, Canaan fir, and scotch pine averaging 6'-8' in height. Several mowed trails run throughout the property. The home has 1,794 SF with brick exterior and was built in 1973. Home features living room with large picture window with cascading view over the countryside, oak eat-in kitchen with fireplace and leads to the 3-seasons room, full bath, and 3 bedrooms on the main level. Lower level has a finished family room with fireplace, full bath, office, possible fourth bedroom, and attached garage. Stark County parcel #1312870 and #1309956. Current taxes are \$816.02 per half year.

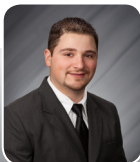
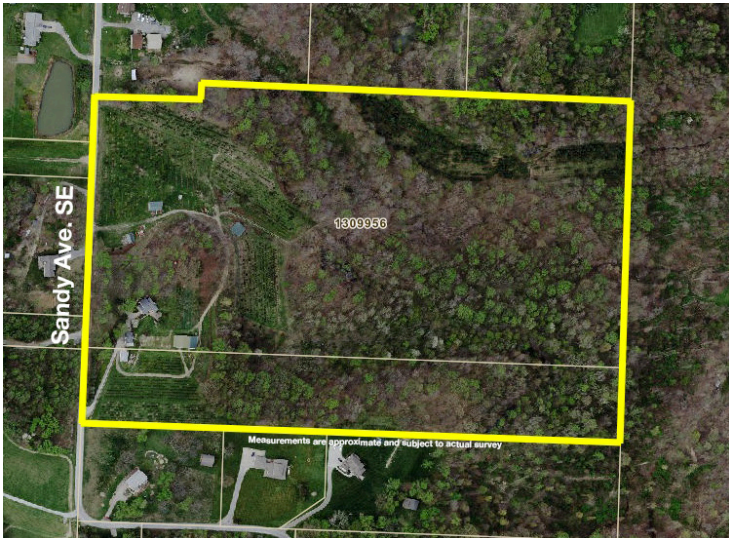
TERMS ON REAL ESTATE: 15% down auction day, balance due at closing. A 10% buyer's premium will be added to the highest bid to establish the purchase price, which goes to the seller. Any desired inspections must be made prior to bidding. All information contained herein was derived from sources believed to be correct. Information is believed to be accurate but not guaranteed. Property to be sold as an entirety and not to be offered in separate parcels.

ALSO SELLING: 800 Polaris Ranger EFI H.O. with full cab, 2,100 miles – Power King 1614 garden tractor with belly mower – Power King 1612 garden tractor with rear sprayer – 14'x7' Hallmark tandem-axle contractor trailer with tools – Rustler 2-horse trailer setup with commercial all-American 18HP gas power washer and water tank, 3500 PSI @ 5 gal./min – 15' tandem-axle equipment trailer – Homemade gas-powered sawmill, 16' capacity – Christmas tree wrapping trailer – Homemade backhoe, gas engine – Loads of rough-sawn lumber, cherry, white oak, red oak, maple, and black walnut – ONAN 4KW gas generator – Bolt bins and bolt stock – Kennedy machinist tools – End mills – Hold downs – Tap & die – C/H upright air compressor – Lincoln Idea arc welder – Cut-off saw – Weed whip – Yard tools – Chains & binders – Comealongs – Gas log splitter – Several small utility trailers – Massey Harris project tractor – Massey Harris parts – Hardy wood-fired boiler – Gravely walk-behind mower & assorted Gravely parts – 10 KW 4-cl. Military generator/trailer – Wood ext. ladders – Old bikes – Torch cart – Loads of hand tools – Large wood lathe – Chainsaw sharpener – Delta sharpening station – Boice crane wood planer – Router table – Table saw – Craftsman jointer.

COLLECTIBLES – FURNITURE: 2 mirrored-back curio cabinets – Large oak entertainment center – 5-pc. Sumpter bedroom suite – Early 3-door bookcase – Chest of drawers – Plaid sofa & loveseat – Kinkade print – Artwork – Electronics – Platform rocker – Floor & table lamps – Precious Moments – Fenton – Hand-painted glass – Oak dining table with 6 chairs – Oak ext. table & chairs – Figurines – Quilt rack – Modern computer desk – Christmas décor – Usual household. Oak 50 years of accumulation, anything may turn up!

TERMS ON CHATTELS: Driver's license or State ID required to register for bidder number. Cash, Check, Debit Card, Visa, or MasterCard accepted. 4% buyer's premium on all sales, 4% waived for cash or check. Information is believed to be accurate but not guaranteed. Multi Par auction process may be used.

AUCTION BY ORDER OF: The McMillen Family Trust



Auctioneer/Realtor®
ERIC BEVINGTON
330-417-5471
eric@kikocompany.com



Auctioneer/Realtor®
GEORGE P. KIKO
330-418-1095
george@kikocompany.com



330.455.9357 • kikoauctions.com

